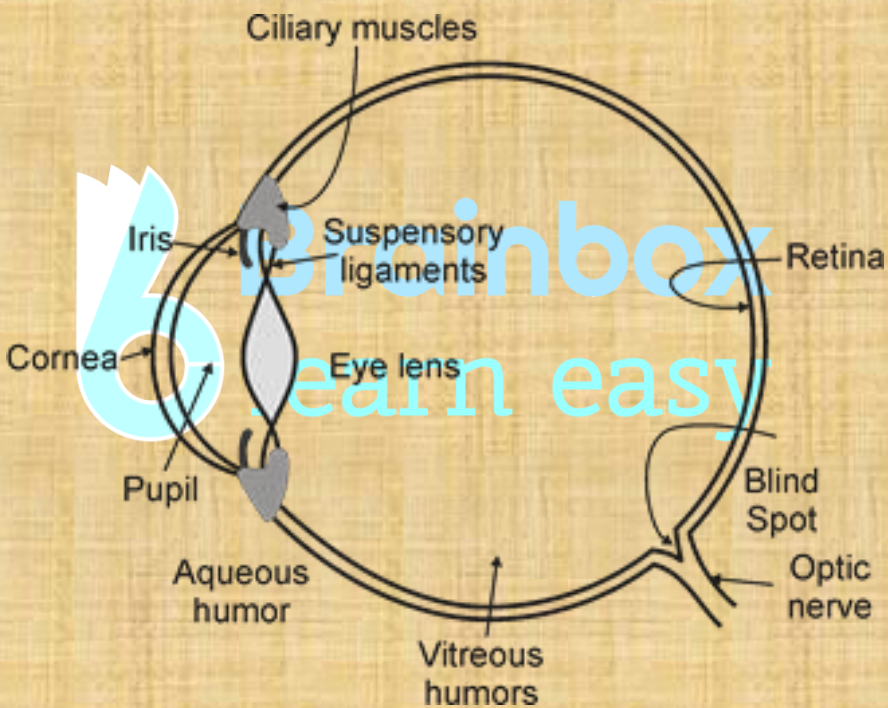


## Chapter 16

# LIGHT

## Construction of Human Eye:



### Cornea:

It is a transparent protective layer in human eye through which light enters the eye.

### Pupil:

It regulates and controls the amount of light entering eye

### Iris:

It is a dark muscular diaphragm that controls the size of the pupil.

### **Ciliary muscles:**

These can alter the curvature and thickness of the eye lens.

### **Crystalline lens:**

It provides the finer adjustment of focal length.

### **Retina:**

It is a light – sensitive screen on which the image of the object is formed.

### **Rods:**

Rods help to detect the intensity of light.

### **Cones:**

Cones help us to identify the colour.

### **Optic nerves:**

These are the nerves, which send the electrical signals generated by the illumination due to activation of light sensitive cells.

