

Chapter 03

HUMAN REPRODUCTION

External genitalia:

- Vulva - Located on the pubic region.
- Monspubis is a cushion of fatty tissue covered by skin and pubic hair.

Homologous structures:

Female

Male

Clitoris

= Penis (corpora cavernosa)

Labia majora

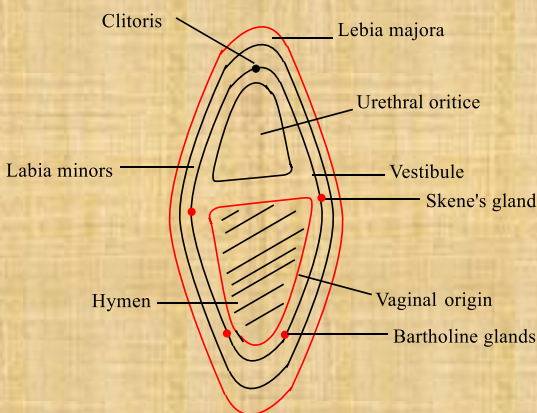
= scrotum

Bartholena glands

= cowpers glands

(Bulbo vestibular glands)

(Bulbourethral gland)



Hymen:

- Is a thin layer which is formed in virgin women.
- It is after tear during the first coitus(Inter course).

- It can also be broken by a sudden fall swimming, Cycling or Horse riding, sports.

Glands:

Bartholin's gland and skene's gland:

Secrete mucous lubricant.

