

Chapter 03

HUMAN REPRODUCTION

FEMALE REPRODUCTIVE SYSTEM:

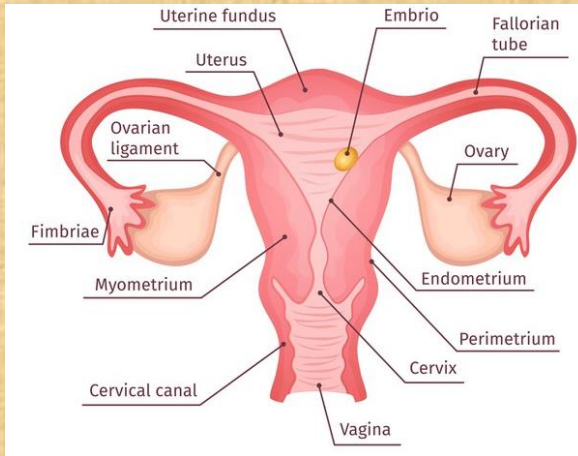


Figure: Woman reproductive system

Primary sex organ:

- Ovary – Gamete – Ovum
- Several steroid hormones (ovarian hormones)

Other organ & ducts:

- Uterus, fallopian tube, vagina.

Glands:

- Bartholine glands & mammary glands.
- These structures functionally support the process of ovulation, Fertilisation, pregnancy, birth and child care.