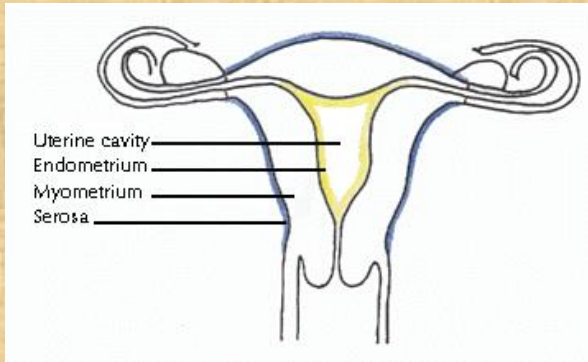


## Chapter 03

# HUMAN REPRODUCTION

### Uterus(WOMB):



- Is the site for Implantation.
- Is a single and it is also called Womb.

**Shape:** Inverted pear

**Support:** By ligaments attached to the pelvic wall.

### Pelvic wall:

- 3-layers of tissue.
  - External thin- Perimetrium
  - Middle thick smooth muscle myometrium
  - Inner glandular layer endomatrium

### Fallopian tube:

10 to 15 cm. Long.(Isthmus, ampulla, Infundibulum)

Uterine wall is made up of with highly vascular layers – 3 layers.