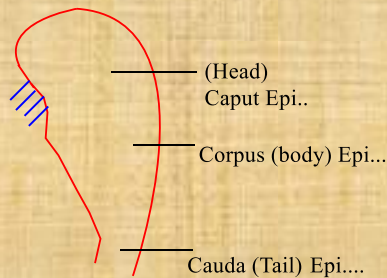


Chapter 03

HUMAN REPRODUCTION

Epididymis:

- It is connected to vasa efferentia.
- It is a highly coiled tubes approx 6 mtrs long.
- In this part sperm are store 18-24 hrs.



- In this duration sperm attain physiological maturity.
- Lower part of Epididymis will continue with a duct called **Vas deferens**.