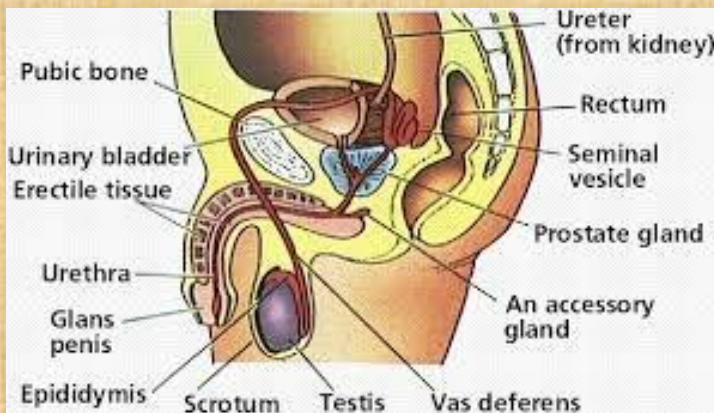


## MALE REPRODUCTIVE SYSTEM:



*Figure: MALE REPRODUCTIVE SYSTEM*

- Male reproductive system located in the pelvis region.
- Comprises of primary sex organs – Testes – Produce **Gametes (sperm) and Hormones(testosterone)**
- See sex organs – helping organs – Epididymis, seminal vesicles, prostate gland, cowpers gland.
- Ducts- vas deferens, urogenital duct
- External genitalia- penis.

### TESTIS:

- A pair of testis situated outside the abdominal cavity or external abdominal cavity with in a pouch called scrotum.